

Harvesting nature's energy

› HEAT PUMP SYSTEM SOLUTIONS BY DESIGN

› Heat Pump Solutions for
water and space heating
– the STIEBEL ELTRON way



STIEBEL ELTRON

We don't leave quality to chance. So you don't have to take chances.

STIEBEL ELTRON provides innovative technology to heat, conserve energy and reduce bills. For over nine decades, across 120 countries, we have offered our customers products and services of exceptional quality with a focus on protecting the environment. With an unbeatable breadth of green technologies we design systems specifically to suit your project. We ensure all the components are appropriate to your individual requirements - whether you want to save on bills in a flat or are a developer of huge commercial buildings thus maximising performance and return on investment.

Our experience, your benefit | With STIEBEL ELTRON UK you can have the comfort of knowing that you are dealing with a stable and well established business with a long track record of manufacturing quality heat pump solutions.

Because of our firm commitment to the best customer service, STIEBEL ELTRON possess great facilities for training our partners on our heat pump and solar products. With dedicated training rooms and fully operational installations of products for demonstration and hands-on learning, we offer the best possible support to our installer partners



Fully equipped and highly efficient as standard

STIEBEL ELTRON offer a wide and varied range of ground source heat pumps with kW outputs from as little as 5kW to as large as 500kW and with options up to 20kW on a single phase supply, you can be sure that we have the right ground source heat pump for your project.

The New WPF range of Ground source heat pumps packs a real

punch | The unit has an extremely high level of integration making it quick and easy to install and with a high level of CoP, you certainly won't be compromising on quality.

WPF S

- › 5, 7, 10, 13kW options in single phase a further 16kW option is available in three phase (400V)
- › Extremely high performance
- › Very quiet in operation
- › Up to 65°C heating flow temperature
- › Integrated heat and electricity meter
- › The WPF heat pump comes pre-assembled with the following items: heat pump controller, highly efficient brine circulation pump, highly efficient heating circuit pump, electric booster heater, pressure hoses, brine expansion vessel, heating circuit expansion vessel and soft starter.

WPF S



Model		WPF 5 S	WPF 7 S	WPF 10 S	WPF 13 S
		232937	232938	232939	232940
Output at B0/W35 (EN 14511)	kW	5.88	7.61	10.31	13.01
Power consumption at B0/W35 (EN 14511)	kW	1.23	1.60	2.17	2.74
CoP at B0/W35 (EN 14511)		4.78	4.75	4.76	4.75
Dimensions (H/W/D)	mm	1319 / 598 / 658	1319 / 598 / 658	1319 / 598 / 658	1319 / 598 / 658

Ground source heat pumps – WPF Basic | The WPF S Basic heat pump is a powerful energy provider for DHW and central heating. The unit has an integral controller, heating circulation pump, safety valve and heating element.

WPF S Basic

- › 5, 7, 10kW options in single phase a further 13 and 16kW options available in three phase (400V)
- › Up to 65°C heating flow temperature
- › Integral heat pump controller
- › Integrated heating circulation pump - efficiency category A

WPF S Basic



Complete ground source solution for central heating and domestic hot water | The WPC ground source heat pump is the complete solution for central heating and DHW. The WPC ground source heat pump contains a 200 litre cylinder underneath its soundproof external casing making this heat pump suitable even where space is at a premium.

WPC GB

- › 5, 7, 10, 13kW options in single phase a further 16kW option is available in three phase (400V)
- › Extremely high performance
- › Very quiet in operation
- › Up to 65°C heating flow temperature
- › Integrated heat and electricity meter
- › The WPC heat pump comes pre-assembled with the following items: heat pump controller, highly efficient brine circulation pump, highly efficient heating circuit pump, electric booster heater and soft starter.

WPC S GB



Large ground source heat pumps - WPF 20-66 G | The WPF G series of ground source heat pumps have been developed specifically to supply heat to larger residential buildings as well as commercial and industrial buildings. The heat pump is suitable for projects with a heat demand up to 400kW.

WPF 20 – 66 G

- › Individual devices in six output stages with a further high temperature unit available in 27kW
- › Very high efficiency
- › Heating flow temperature up to to 65°C
- › Space saving module up to two models can be stacked
- › Modern, robust design.
- › Up to +75°C flow temperatures is possible with the WPF 27 HT

WPF 20-66 G | WPF 27 HT



Model		WPF 5 S Basic	WPF 7 S Basic	WPF 10 S Basic
		074425	074426	220819
Output at B0/W35 (EN 14511)	kW	5.88	7.64	9.7
Power consumption at B0/W35 (EN 14511)	kW	1.36	1.70	2.22
CoP at B0/W35 (EN 14511)		4.33	4.50	4.37
Dimensions (H/W/D)	mm	960 / 510 / 680	960 / 510 / 680	960 / 510 / 680

Model		WPC 5 S GB	WPC 7 S GB	WPC 10 S GB	WPC 13 S GB
		234308	234309	234310	234311
Output at B0/W35 (EN 14511)	kW	5.88	7.61	10.31	13.01
Power consumption at B0/W35 (EN 14511)	kW	1.23	1.60	2.17	2.74
CoP at B0/W35 (EN 14511)		4.78	4.75	4.76	4.75
Dimensions (H/W/D)	mm	1925 / 600 / 700	1925 / 600 / 700	1925 / 600 / 700	1925 / 600 / 700

Model		WPF 20 G	WPF 27 G	WPF 35 G	WPF 40 G
		233003	233004	233005	233006
Output at B0/W35 (EN 14511)	kW	21.5	29.69	38.04	43.1
Power consumption at B0/W35 (EN 14511)	kW	4.61	6.12	7.96	9.23
CoP at B0/W35 (EN 14511)		4.66	4.85	4.78	4.67
Dimensions (H/W/D)	mm	1154 / 1242 / 860	1154 / 1242 / 860	1154 / 1242 / 860	1154 / 1242 / 860

Model		WPF 52 G	WPF 66 G	WPF 27 HT
		233007	233008	233009
Output at B0/W35 (EN 14511)	kW	55.83	67.10	27.41
Power consumption at B0/W35 (EN 14511)	kW	11.61	14.71	6.32
CoP at B0/W35 (EN 14511)		4.81	4.56	4.34
Dimensions (H/W/D)	mm	1154 / 1242 / 860	1154 / 1242 / 860	1154 / 1242 / 860

Ground source heat pumps – WPF MS | The WPF MS range of Ground source heat pumps offer a flexible solution to challenging installations where only a single phase supply is available.

WPF MS

- › 7 and, 10kW options in single phase
- › Up to 65°C heating flow temperature

WPF MS



Complete ground source solution for central heating and domestic hot water | Offering up to 20kW on a single phase supply, the WPF SET (S) comprise two WPF M (S) heat pumps, the pipework set for heating and source and the heat pump manager. The modular design enables the size to be matched to the heat demand.

WPF SET (S)

- › 14, 17 and, 20kW options on a single phase supply
- › Up to 65°C heating flow temperature
- › Pipework set for heating and heat source included
- › Heat pump controller included in the pack
- › One heat pump can maintain the temperature in the house while the other can heat hot water.

WPF SET (S)





Model		WPF 7 M (S)	WPF 10 M (S)
		222553	222552
Output at B0/W35 (EN 14511)	kW	7.8	9.9
CoP at B0/W35 (EN 14511)		4.4	4.5
Dimensions (H/W/D)	mm	971 / 510 / 640	971 / 510 / 640

Model		WPF 14 SET (S)	WPF 17 SET (S)	WPF 20 SET (S)
		223416	223417	223418
Output at B0/W35 (EN 14511)	kW	15.6	17.7	19.8
CoP at B0/W35 (EN 14511)		4.4	4.5	4.5
Dimensions (H/W/D)	mm	971 / 1240 / 640	971 / 1240 / 640	971 / 1240 / 640

The benchmark for energy efficiency

Inverter heat pumps – Setting new standards in efficiency | STIEBEL ELTRON work continuously to increase the efficiency and performance of our heat pumps. The new WPL 15 / 25 AS is the result of adding the latest technology to our 40 year's worth of experience.

WPL 15 / 25 AS

- › Inverter driven compressor optimised for UK weather conditions
- › Extremely high CoP
- › Increased efficiency through Enhanced Vapour Injection (EVI)
- › Extremely quiet in operation
- › Up to +65°C flow temperature is possible
- › Performance at temperatures as low as -20°C
- › Blue fin coated evaporator as standard

WPL AS

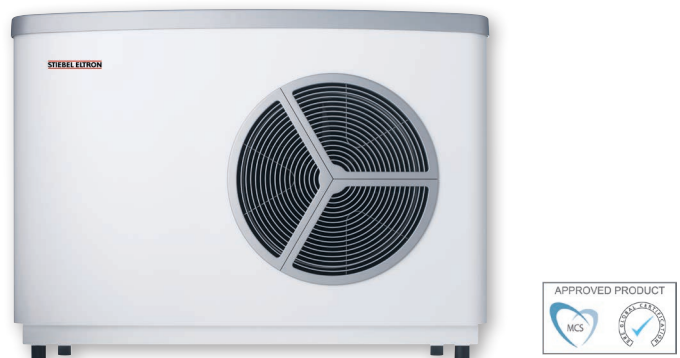


3 in 1 | Extremely efficient, quiet in operation and compact in size, the WPL 10 ACS is the ideal product for new build projects.

WPL 10 ACS

- › Extremely quiet in operation
- › Small footprint
- › Heating and cooling
- › Electronic expansion valve
- › Integrated heat meter
- › Simple to install

WPL 10 ACS



Model		WPL 15 AS	WPL 25 AS	WPL 10 ACS
		232491	232492	227995
Output at A7/W35 (EN 14511)	kW	4.28	8.00	7.72
Output at A-7/W35 (EN 14511)		6.86	13.05	4.94
Power consumption at A7/W35 (EN 14511)	kW	0.94	1.65	2.05
CoP at A7/W35 (EN 14511)		4.55	4.85	3.77
Dimensions (H/W/D)	mm	900 / 1270 / 593	1045 / 1490 / 593	900 / 1270 / 593

Flexibility is the key | The WPL E air source heat pump is perfect for both new build and refurbishment projects, the same unit can be installed either externally or internally within the property creating the ideal product for the difficult specifications. With a range of kW outputs from 8kW to 16kW this unit really is your flexible friend.

WPL E

- › Extremely quiet in operation
- › High CoP's
- › Enhanced vapour injection (EVI)
- › Available for internal installation
- › Integrated heat and electricity meters
- › Electronic expansion valve
- › Up to +60°C flow temperature is possible
- › Performance at temperatures as low as -20°C
- › Up to +75°C flow temperatures is possible with the WPL 33 HT(S)

WPL E



The bigger the better | The WPL G air source heat pump is ideal for properties with high output demand. The already impressive output of the heat pump can be cascaded together to give an output of up to 400kW. This creates the perfect opportunity to modernise existing properties.

WPL G

- › Suitable for cascades with higher output requirements
- › Integrated heat and electricity meters
- › Electronic expansion valve
- › Up to +60°C flow temperature is possible
- › Performance at temperatures as low as -20°C
- › Coated evaporator as standard.

WPL G



Model		WPL 13 E	WPL 18 E	WPL 23 E	WPL 33 HT (S)
		227756	227757	227758	229937
Output at A7/W35 (EN 14511)	kW	8.93	12.90	16.56	5.61
Power consumption at A7/W35 (EN 14511)	kW	2.05	2.89	4.15	1.27
CoP at A7/W35 (EN 14511)		4.35	4.46	3.99	4.41
Dimensions (H/W/D)	mm	1116 / 784 / 1182	1116 / 784 / 1182	1116 / 784 / 1182	1116 / 784 / 1332

Model		WPL 34 G	WPL 47 G	WPL 57 G
		228835	228836	228837
Output at A7/W35 (EN 14511)	kW	21.66	27.12	29.87
Power consumption at A7/W35 (EN 14511)	kW	5.54	7.06	8.76
CoP at A7/W35 (EN 14511)		3.91	3.84	3.41
Dimensions (H/W/D)	mm	1845 / 1860 / 2040	1845 / 1860 / 2040	1845 / 1860 / 2040

Buffer cylinders

For heat pump/solar operation



Model	SBP 100	SBP 200 E	SBP 400 E	SBP 200 E cool	SBP 200 E cool	SBP 700 E	SBP 700 E SOL
	185443	185458	220824	227590	227591	185459	185460
Rated Capacity	100	200	400	200	400	700	700
Surface area, lower indirect coil	m2						2
Dimensions (H/W/D)	mm	955/510/510	1535/-/-	1710/-/-	1535/-/-	1710/-/-	1890/-/-
Diameter	mm		630	750	630	750	910



Model	SBP 1000 E	SBP 1500 E	SBP 1000 E SOL	SBP 1500 E SOL	SBP 1000 E cool	SBP 1500 E cool
	227564	227565	227566	227567	227588	227589
Rated Capacity	1000	1500	1000	1500	1000	1500
Surface area, lower indirect coil	m2		3	3.6		
Dimensions (H/W/D)	mm	2240/-/-	2154/-/-	2240/-/-	2154/-/-	2240/-/-
Diameter	mm	790	1000	790	1000	822

Model	WDH 1000 SBP	WDH 1500 ABP	WDH 1000 cool	WDH 1500 cool
	231929	231930	231921	231922
Insulation for	SBP 1000 E/E SOL	SBP 1500 E/E SOL	SBP 1000 E cool	SBP 1500 E cool
Dimensions (H/W/D)	mm	2340/-/-	2255/-/-	2340/-/-
Thermal insulation thickness	mm	110	110	110
Standby energy consumption/24h at 65°C	kWh	3.7	4.5	3.5
				4.3

Buffer and DHW cylinder For heat pump/solar operation



Model	Hydrotower	
	For use with WPL 10 ACS, WPL 15 AS, WPL 25 AS, WPF 5 (S) and WPF 7 (S)	
	233479	
Rated Capacity	DHW	200
Rated Capacity Buffer		75
Surface area coil	m ²	3.2
Dimensions (H/W/D)	mm	2020/-/-
Diameter		550

Thermal store with instantaneous DHW heat exchanger



Model	SBS 601 W	SBS 801 W	SBS 1001 W	SBS 1501 W	SBS 601 W SOL	SBS 801 W SOL	SBS 1001 W SOL	SBS 1501 W SOL
	229980	229981	229982	229983	229984	229985	229986	229987
Rated Capacity	600	800	1000	1500	600	800	1000	1500
Surface area, lower indirect coil	m ²				1.5	2.4	3	3.6
Surface area, DHW indirect coil	m ²	7	9	11.5	14	7	9	11.5
Dimensions (H/W/D)	mm	1665/-/-	1830/-/-	2240/-/-	2155/-/-	1665/-/-	1830/-/-	2240/-/-
Diameter	mm	750	790	790	1000	750	790	1000
Diameter inc. thermal insulation	mm	970	1010	1010	1220	970	1010	1220

Model	WDH 601 SBS	WDH 801 SBS	WDH 1001 SBS	WDH 1501 SBS
	231925	231926	231927	231928
Insulation for	SBS 601 W/W SOL	SBS 801 W/W SOL	SBS 1001 W/W SOL	SBS 1501 W/W SOL
Dimensions (H/W/D)	mm	1775/-/-	1940/-/-	2350/-/-
Thermal insulation thickness	mm	110	110	110
Standby energy consumption/24h at 65°C	kWh	2.6	2.9	3.5
				4.3

DHW cylinders

For heat pump/solar operation



Model		HSBB (GB)
		233469
Rated Capacity	DHW	170
Surface area coil	m ²	3.6
Dimensions (H/W/D)	mm	1921/600/650

For use with WPL 10 ACS, WPL 15 AS, WPL 25 AS





Model		SBB 301 WP (GB)	SBB 302 WP (GB)	SBB 401 WP SOL (GB)	SBB 501 WP SOL (GB)
		228944	228945	228946	228947
Rated capacity	l	300	280	400	500
Surface, indirect coil, top	m2	3.2	4.8	4	5
Surface, indirect coil, lower	m2			1.4	1.4
Dimensions (H/W/D)	mm	1710/-/-	1700/-/-	1875/-/-	1976/-/-
Diameter	mm	700	700	750	810



Model		SBB 751	SBB 1001	SBB 751 SOL	SBB 1001 SOL
		229292	229293	229294	229295
Rated Capacity	l	750	1000	750	1000
Surface area, lower indirect coil	m2			3	3.9
Dimensions (H/W/D)	mm	1777/-/-	2277/-/-	1777/-/-	2277/-/-
Diameter	mm	790	790	790	790
Diameter inc. thermal insulation	mm	1010	1010	1010	1010

Model		WDH 751 SBB	WDH 1001 SBB
		231923	231924
Insulation for		SBB 751/751 SOL	SBB 1001/1001 SOL
Dimensions (H/W/D)	mm	1840/-/-	2350/-/-
Thermal insulation thickness	mm	110	110
Standby energy consumption/24h at 65°C	kWh	2.9	3.6

Air source heat pump accessories



WPIC | compact air routing module for WPL 13/18/23 E (internal installation)

Part No	Model	Height	Width	Depth
187909	WPIC	637mm	1240mm	800mm



HM(S)



HM(S) Trend

HM(S) and HM(S) Trend module | hydraulic module for WPL 10 ACS, WPL 13/18 E and WPL 15/25 AS

Part No	Model	Height	Width	Depth
233760	HM(S)	896mm	588mm	405mm
233826	HM(S) Trend	896mm	588mm	405mm



AS-WP 1



AS-WP 2

AS-WP | connection sets for use with WPL 15/25 AS. Only suitable for systems with supply lines coming from the ground.

Part No	Model	Connections
233622	AS-WP 1	32 x 2.9mm
233623	AS-WP 2	G 1 1/4

Ground source heat pump accessories



WPSV | brine manifold

Part No	Model	No. of brine circuits	Ball valve with clamp fitting
232460	WPSV 25-4	4	DN 20
232461	WPSV 25-6	6	DN 20
232462	WPSV 32-4	4	DN 25
232463	WPSV 32-6	6	DN 25
232464	WPSV 40-4	4	DN 32
232465	WPSV 40-6	6	DN 32



WPSB | brine assembly

Part No	Model	Circulation pump type
223375	WPSB 308 E	Stratos para 30/1-8E
232883	WPSB 312 E	Stratos para 30/1-12E
232884	WPSB 408 E	Stratos 40/1-8 E



WPSF | brine filling unit

Part No	Model	Suitable for
233307	WPSF	Ground source heat pumps up to 16kW in output



MAG | brine expansion vessel

Part No	Model	Expansion vessel	Inlet pressure
189981	MAG 12	12l	0.05 MPa
227415	MAG 18	18l	0.05 MPa
227416	MAG 25	25l	0.05 MPa
227417	MAG 50	50l	0.05 MPa



MEG | transfer medium concentrate

Part No	Model	Thermal Liquid	Mixture	Liquid content
231109	MEG 10l	10l	Concentrate	Ethylene glycol
161696	MEG 30l	30l	Concentrate	Ethylene glycol

Heat pump controllers



WPM 3 | Heat pump manager

Part No	Model	Suitable for	Height	Width	Depth
232980	WPMW 3	Wall mounting enclosure	215mm	246mm	140mm
232981	WPMS 3	Control panel version	100mm	150mm	85mm



WPM II | Heat pump manager

Part No	Model	Suitable for	Height	Width	Depth
185450	WPMW II	Wall mounting enclosure	215mm	246mm	140mm
232981	WPMS II	Control panel version	100mm	150mm	85mm



WPM 2.1 | Heat pump manager (suitable for WPL 15 / 25 AS and WPL 33 HT (S))

Part No	Model	Suitable for	Height	Width	Depth
230010	WPMW 2.1	Wall mounting enclosure	215mm	246mm	140mm
230011	WPMS 2.1	Control panel version	100mm	150mm	85mm

WPM-RBS | Relay box for high efficiency pumps

Part No	Model	Suitable for	Height	Width	Depth
230381	WPM-RBS	Wall mounting enclosure	211mm	205mm	56mm



MSMW | Additional controller for mixer and swimming pools

Part No	Model	Suitable for	Height	Width	Depth
074519	MSMW	Wall mounting enclosure	215mm	246mm	140mm
074518	MSMS	Control panel version	100mm	150mm	85mm



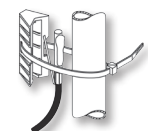
FE 7 | Room thermostat

Part No	Model	Suitable for use with	Height	Width	Depth
185579	FE 7	WPM 3, WPM II, WPM 2.1 & WPMi	211mm	205mm	56mm



FEK | Relative humidity remote control unit

Part No	Model	Suitable for use with	Height	Width	Depth
220193	FEK	WPM 3, WPM II	97mm	147mm	33mm



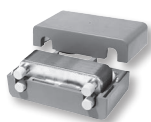
Additional sensors for the heat pump system

Part No	Model	Suitable for	Length
165341	AVF 6	Contact sensor	1m
165342	TF 6	Immersion sensor	1m
165339	AFS 2	Outside temperature sensor	1m



WRV 32 | Corrugated connection pipe with union nut and threaded end for optional linking of the lower and upper indirect coils. Suitable for floorstanding DHW cylinder 401/ 501 WP SOL

Part No	Model	Suitable for use with
220193	WRV 32	SBB 401 / 501 WP SOL
232629	WRV 40	SBB 600 / 800 / 1000 WP SOL



WT | Plate-type heat exchanger

Part No	Model	Height	Width	Depth
070633	WT 10	313mm	113mm	99.6mm
070634	WT 20	313mm	113mm	136.5mm
071091	WT 30	313mm	113mm	173.5mm
229338	WT 40	313mm	113mm	219.7mm

Heating hydraulic accessories



UP - Heating circuit pumps

Part No	Model	Part No	Model
232942	UP 25 / 7.0 E	232943	UP 25 / 7.5 E
233561	UP 25 / 1-8 E	222374	UP 30 / 1-8 E
227422	UP 40 / 1-8 E	227423	UP 50 / 1-12E

High efficiency secondary return pump



UPZ DHW - high efficiency secondary return pump

Part No	Model
233719	UPZ DHW

Compact installation WPKI for SBP 100 Buffer Cylinders



WPKI-V

Part No	Model	Suitable for
074347	WPKI-V	Compact installation for the connection of the WPF to the SBP 100



WPKI-PE (includes pump fitting)

Part No	Model	Suitable for
233097	WPKI - PE	Compact installation for the connection of the WPF M to the SBP 100



WPKI-HE (includes pump fitting, excl circulation pump)

Part No	Model	Suitable for
233098	WPKI-HE	Compact installation for the connection of the heating circuit (incl pump fitting) with SBP 100



WPKI-WE

Part No	Model	Suitable for
233099	WPKI- W E	Compact installation for DHW heating with WPF M heat pumps



WPKI-5

Part No	Model	Suitable for
220830	WPKI 5	For heating heat pumps WPL 10/13/18/23/33/34 and WPF 10/13/16M with buffer cylinders 200, 400 and 700l

WPKI for hydraulic connection



WPKI-HK E

Part No	Model	Suitable for
233602	WPKI - HK E	Insulated pump assembly for unmixed heating circuits. Includes, shut off valves with thermometer, A rated circulation pump and gravity brake.



WPKI-HKM E

Part No	Model	Suitable for
233603	WPKI-HKM E	Insulated pump assembly for mixer heating circuits. Includes, shut off valves with thermometer, A rated circulation pump, gravity brake, mixer and mixer motor.

Threaded immersion heaters BGC



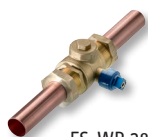
BGC

Part No	Model	Depth of insertion
003769	BGC	500mm
075115	BGC/45	455mm

Filter sets



FS-WP 22



FS-WP 28

FS-WP | Filter sets to protect the heat pump against contamination

Part No	Model		Connection
233511	FS-WP 22	With backwash facility	G1 1/4 A/Cu 28 x 1.5
233512	FS-WP 28	With a removable filter element	G1 1/4 A/Cu 28 x 1.5

Heating diverter valve



HUV 1

HUV | Three way diverter valve with servomotor

Part No	Model	Connection	Part No	Model	Connection
227420	HUV 1	G1	227425	HUV 65	DN 65
223391	HUV 2	G2 3/4	227426	HUV 80	DN80

Fan convector heaters



AUK | Fan convector heaters to replace one or more radiators

Part No	Model	Heating output	Height	Width	Depth
227955	AUK 7	0.65 kW	600mm	690mm	142mm
227956	AUK 14	1.4 kW	600mm	890mm	142mm
227957	AUK 21	1.75 kW	600mm	1090mm	142mm
227958	AUK 28	2.1 kW	600mm	1290mm	142mm
227959	AUK 35	2.35 kW	600mm	1490mm	142mm

Not only heat pumps...

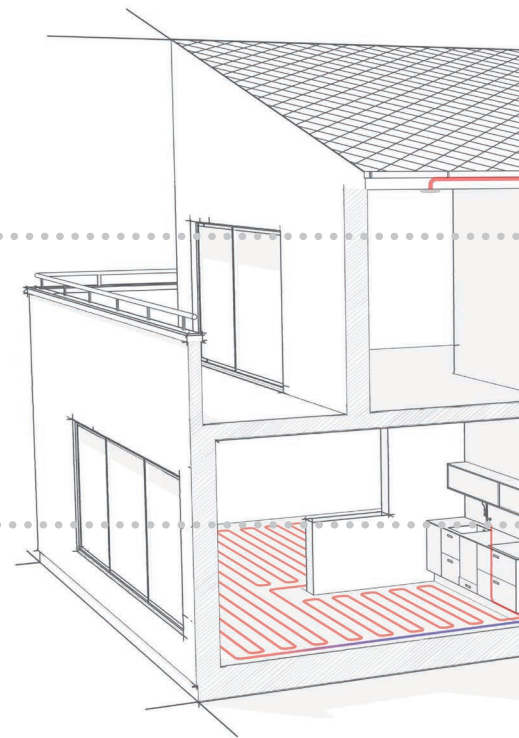
STIEBEL ELTRON offers a solution for every situation.

New ways of extracting energy create new challenges. With our wide range of system solutions, STIEBEL ELTRON provides winning responses to many issues. These are invariably based on innovative and reliable technology, developed, designed and made in Germany.

Heat pumps

› Using heat that is all around us

Heat pumps utilise the solar energy stored in the environment. Depending on the medium, we differentiate between air source, ground source and groundwater heat pumps. The large variety of systems offered by STIEBEL ELTRON mean that a tailor-made solution can be found for any demand.



Ventilation

› Mechanical ventilation with heat recovery

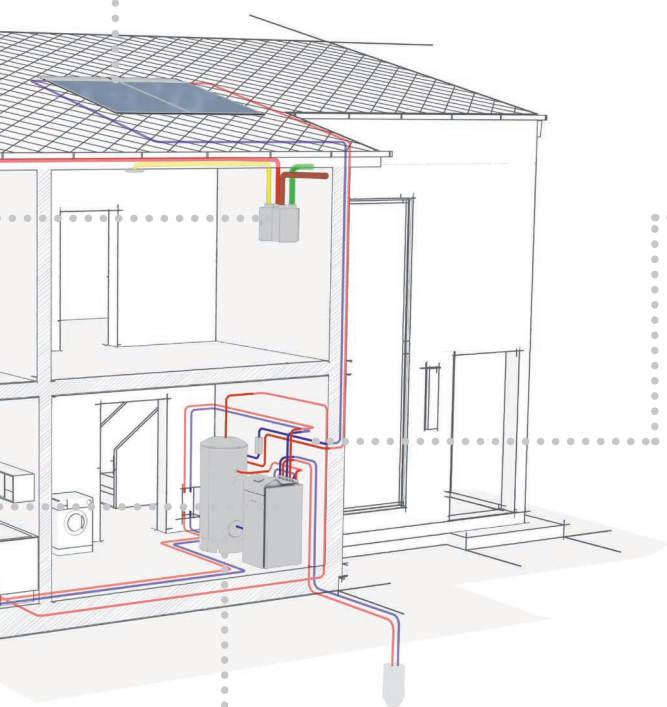
The more airtight buildings become, the more important it is to regulate air change, not least to prevent damage to the building, such as that caused by fungal growth. STIEBEL ELTRON offers tailor-made solutions that provide DHW heating as well as ventilation.



Solar thermal | PV

› Clever use of solar energy

STIEBEL ELTRON can offer first class and durable products to those who want to reduce their energy costs with help from the sun. Solar energy can be used for providing solar central heating backup and solar power. In this area, too, STIEBEL ELTRON quality pays for itself through a long service life, as well as through excellent efficiency.



Accessories and integration

- › So you won't be short of anything - STIEBEL ELTRON accessories
- STIEBEL ELTRON offers a wide range of accessories to ensure that the drive for energy efficiency in your home is never held back. This means the selected system solution can be linked and adapted to the respective conditions on site. Products such as the ISG provide levels of operating convenience that continue to impress even when you are far from home. With this controller, you reduce your dependence on finite resources - an important consideration when making decisions about the future.



Cylinders

› Plenty of heat in store

An adequately sized DHW cylinder, buffer cylinder or system cylinder is a must for any efficient heating system or for the utilisation of a solar thermal system. With its extensive range, STIEBEL ELTRON offers just the right appliance for any application.



Training

- › Our training centre delivers a range of courses to suit your expertise and can help you work towards a renewable future.
- › For course dates please email: sales@stiebel-eltron.co.uk

Design Service

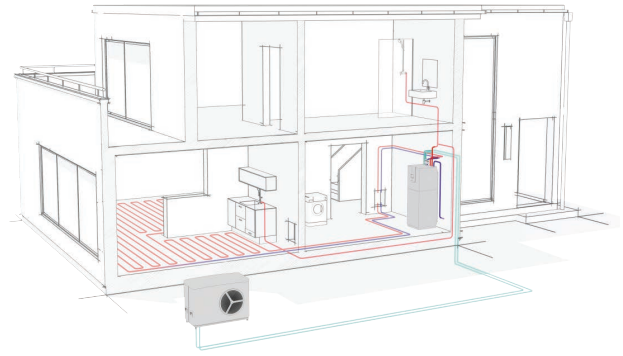
- › We offer a free system design service.
- › Please email plans of your building to...
technical@stiebel-eltron.co.uk

Warranty

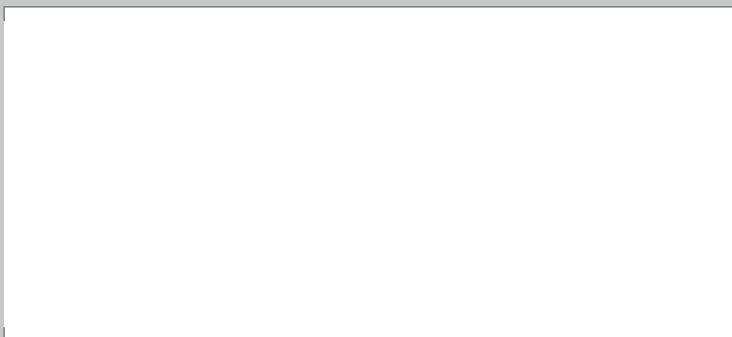
- › 5 years of FREE parts after the initial 2 year guarantee period. Please register your product using our online tool.
www.stiebel-eltron.co.uk/renewables/services

Commissioning

- › We offer a FREE unlimited commissioning service for every system we provide.



Your local installers contact details



STIEBEL ELTRON UK Ltd, Unit 12 Stadium Court, Stadium Road,
Wirral International Business Park, Bromborough, Wirral, CH62 3RP
Telephone: 0151 346 2300 | Fax: 0151 334 2913
Email: info@stiebel-eltron.co.uk | www.stiebel-eltron.co.uk

STIEBEL ELTRON

